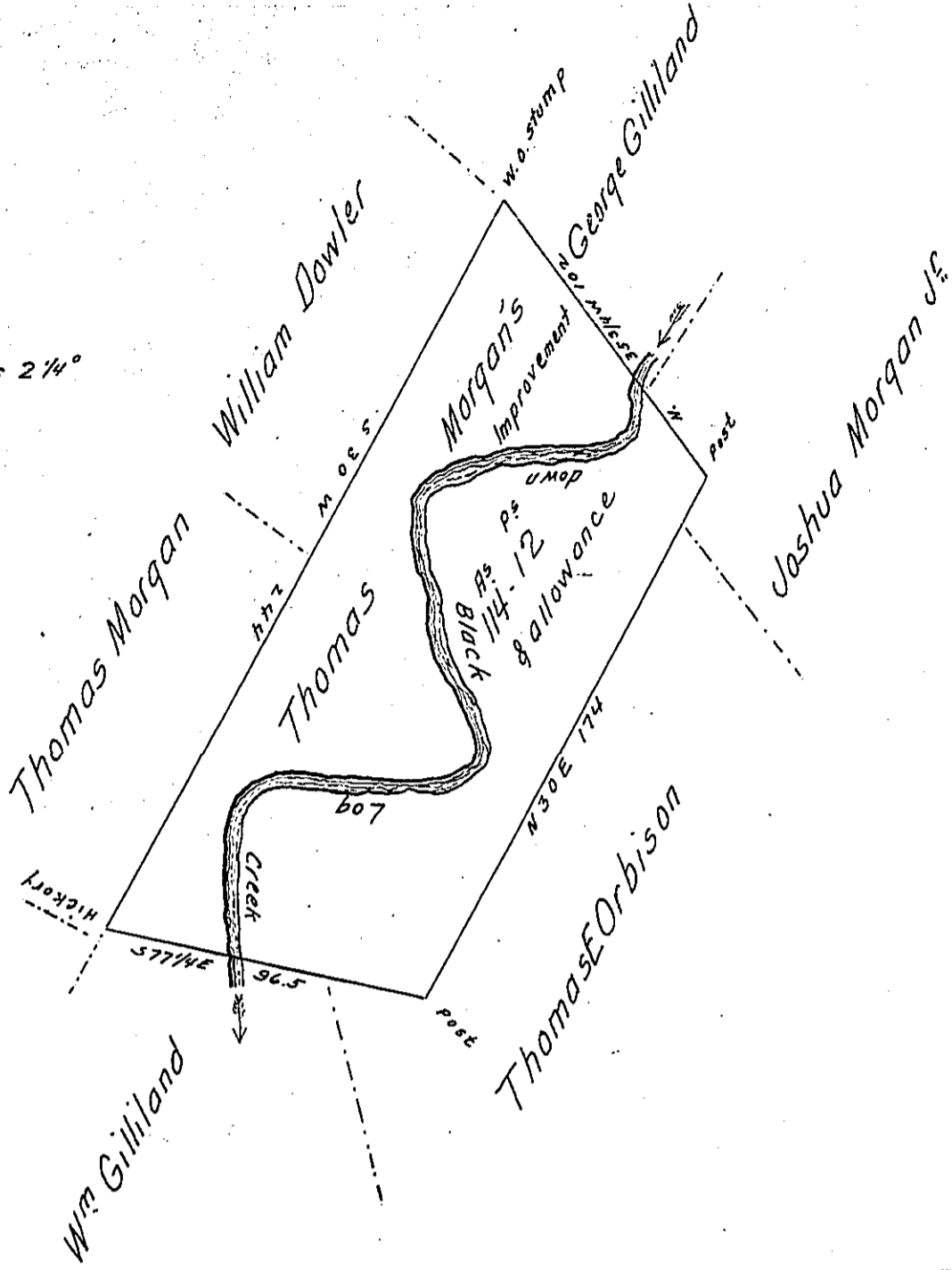


Variation of Compass 2 1/4°



Situate on the waters of Black Log Creek in Cromwell township Huntingdon county. Containing one hundred and fourteen Acres & twelve perches & the usual allowance of Six percent for roads &c. Surveyed the 30th day of March 1865. in pursuance of a Warrant granted to Thomas Morgan (on Improvement Right) dated the 4th day of January A. D. 1865.

To James P. Barr Esqr. S. Gen. Henry Wilson C. S.

IN TESTIMONY that the above is a copy of the original remaining on file in the Department of Internal Affairs of Pennsylvania, made conformably to an Act of Assembly approved the 16th day of February, 1833, I have hereunto set my Hand and caused the Seal of said Department to be affixed at Harrisburg, this twenty-third day of March 1906.

Isaac P. Johnson
Secretary of Internal Affairs.